



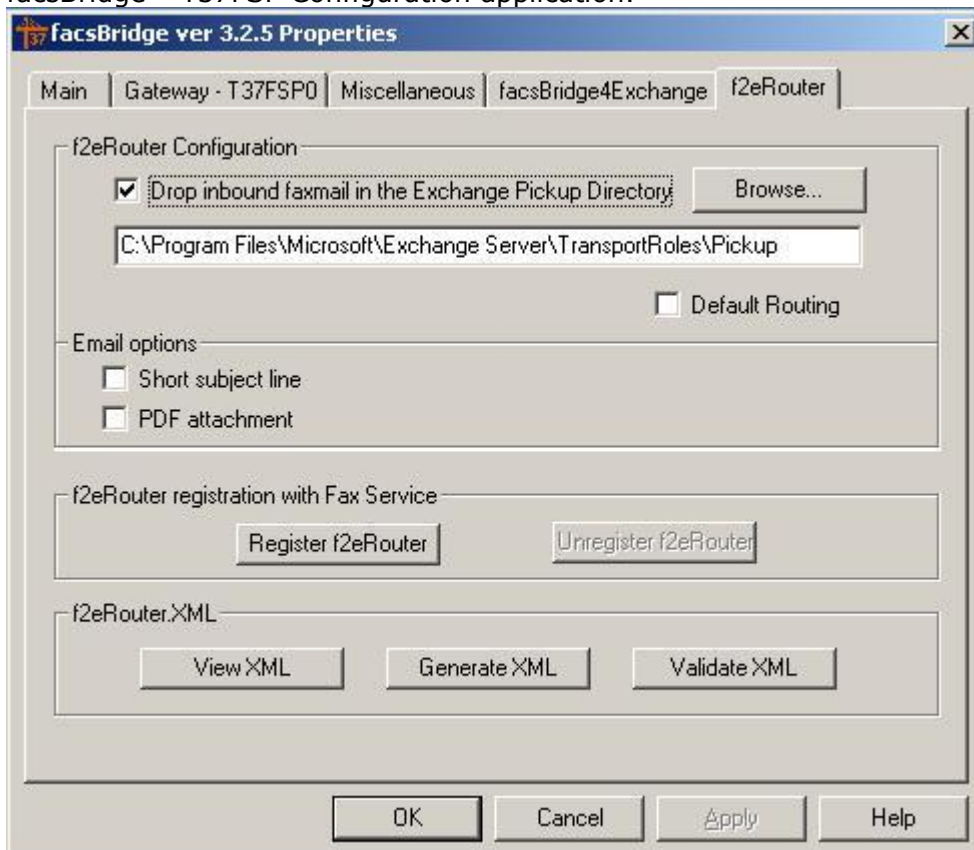
facBridge™ f2eRouter Software Requirements

- Windows Server 2003 or 2008
- Windows Fax Service installed
- MSXML 4.0 SP2 or MSXML 6.0 (Microsoft XML Core Services) is required for the f2eRouter to parse the f2eRouter.xml file. For Windows 2003 download MSXML 4.0 from <http://www.microsoft.com/downloads/details.aspx?FamilyID=3144b72b-b4f2-46da-b4b6-c5d7485f2b42&DisplayLang=en>. In Windows 2008 MSXML 6.0 is installed by default.

facBridge™ f2eRouter Installation Procedure

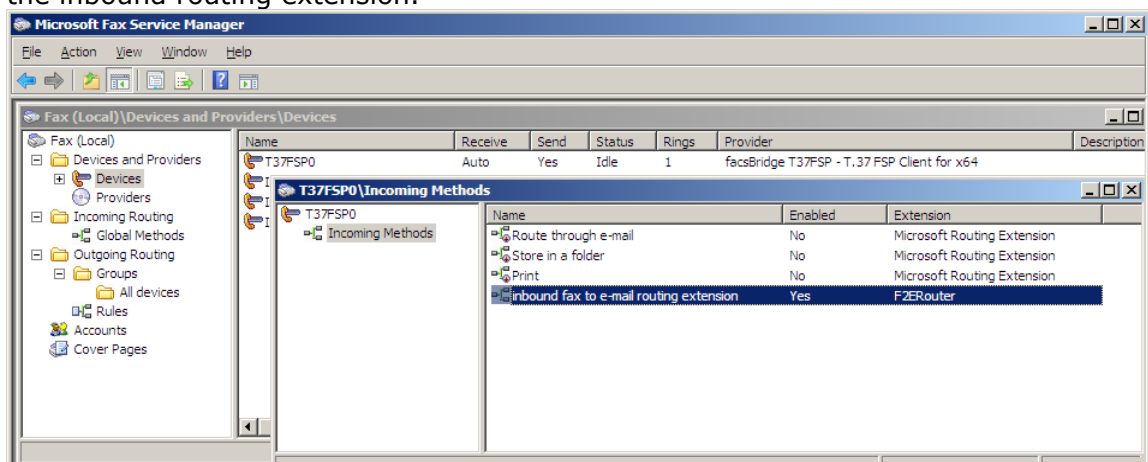
Administrator will have to perform the following steps,

1. Register f2eRouter by pressing *Register f2eRouter* button on f2eRouter TAB in facBridge™ T37FSP Configuration application.



2. Generate *f2eRouter.xml* file located in *Program Files/Sandler Consulting Pty Ltd/facsBridge t37fsp/ (Program Files (x86)/Sandler Consulting Pty Ltd/facsBridge t37fsp/* for x64 Windows Server) by one of two methods

- a) Using *Generate XML* button on f2eRouter TAB in facsBridge™ T37FSP Configuration application (automatically generates file from Active Directory).
 - b) Rename sample file provided *f2eRouterSample.xml* file as *f2eRouter.xml*
3. Edit the following attributes in *f2eRouter.xml*:
Enter *CalledID* (called number) and *EmailAddress* to forward faxmail to.
 4. Once modified, validate the *f2eRouter.xml* file by one of two methods
 - a) Using *Validate XML* button on f2eRouter TAB in facsBridge™ T37FSP Configuration application (automatically runs *ValidateXML.js* script).
 - b) Running *Program Files/Sandler Consulting Pty Ltd/facsBridge t37fsp\ValidateXML.js* script (*Program Files (x86)/Sandler Consulting Pty Ltd/facsBridge t37fsp\ValidateXML.js* for x64 Windows Server).
 5. Review *f2eRouter.xml* file by clicking *View XML* button on f2eRouter TAB in facsBridge™ T37FSP Configuration application.
 6. If *Drop inbound faxmail in the Exchange Pickup Directory* checkbox is selected, f2eRouter will drop the routed faxmail into Exchange Pickup Directory for further delivery. Enter Exchange Pickup Directory path if the checkbox is On. If the checkbox is Off, fill in Mail Server-f2eRouter TAB fields.
 7. *Master Email Address* is set in the Main TAB of facsBridge™ T37FSP Configuration application.
 8. Default Routing is controlled by a check box on the F2ERouter tab of the facsBridge™ T37FSP Configuration application. If default routing is enabled then all inbound faxes that are not associated with the *CalledID* will be forwarded to the Master email address, specified in the above step.
 9. Email attachment format (TIFF or PDF) is controlled by a check box on the F2ERouter tab of the facsBridge™ T37FSP Configuration application.
 10. Use Fax Service Manager (Start->Programs->Accessories->Communications->Fax->Fax Service Manager) to configure associations between fax devices and the inbound routing extension.



11. Make sure *Network Service* has at least read access to *f2eRouter.xml* file.



12. Restart the Fax Service.

For more information see www.sandlerco.com/t37fspext.htm#F2Erouter.